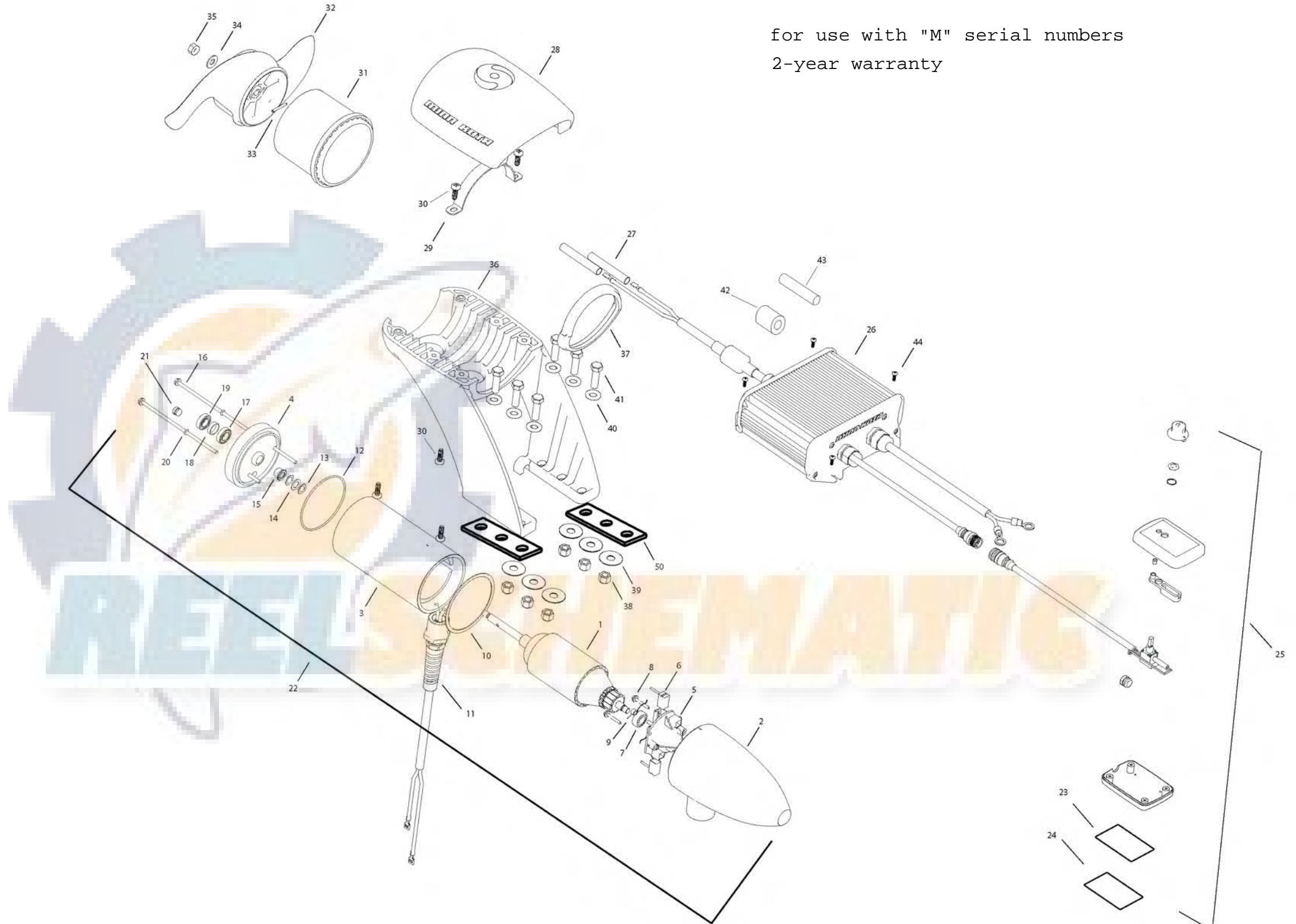


EM Riptide 55
12 VOLT 50 AMPS

for use with "M" serial numbers
2-year warranty



- 1 2-100-207 ARMATURE 12V 3.62
- 2 421-302 BRUSH END HOUSING
- 3 2-200-301 CENTER HOUSING ASSEMBLY
- 4 2-400-338 PLAIN END ASSY (CONTAINS 4, 15, 17, 18, 19)
- 5 2-600-168 BRUSH PLATE ASSEMBLY (CONTAINS 5, 6, 9, 18)
- 6 188-036 BRUSH
- 7 140-010 BEARING
- 8 830-007 SCREW #8-32
- 9 975-040 BRUSH SPRING
- 10 337-036 GASKET
- 11 2772917 LEADWIRE ASSEMBLY
- 12 701-081 O-RING
- 13 990-067 WASHER STEEL
- 14 990-070 WASHER NYLATRON
- 15 144-049 FLANGE BEARING
- 16 830-042 THRU-BOLT 10-32 X 8.83
- 17 880-003 SEAL
- 18 725-035 PAPER TUBE
- 19 880-006 SEAL WITH SHIELD
- 20 701-008 O-RING THRUBOLT
- 21 836-001 ALUMINUM PLUG
- 22 2387103 MOTOR ASSY 12V 3.625 55#
- 23 9950953 VELCRO 1.5 X 2.0 LOOP
- 24 9950950 VELCRO 1.5 X 2.0 HOOK
- 25 2990241 HAND CONTROLLER
- 26 2990246 CONTROL MODULE
- 27 2385401 SHRINK TUBE [4 EA]
- 28 2380211 TOP CAP
- 29 2383810 STRAP, EM
- 30 2383418 SCREW 1/4-20 SELF TAPPING [6 EA]
- 31 2381535 ADAPTER RING, REAR
- 1378170 PROP KIT
- 32 2091170 PROPELLER
- 33 2092600 DRIVE PIN
- 34 2151726 WASHER 5/16, PROP
- 35 2198400 NUT, PROP ANODE
- 36 2381940 LOWER BRACKET
- 37 2381530 ADAPTER RING, FRONT
- 38 2383122 NUT 3/8-16 NYLOCK [6EA]
- 39 2381726 WASHER FENDER 3/8 X 1 1/4 OD [6 EA]
- 40 2381728 WASHER 3/8 [6 EA]
- 41 2383422 SCREW 3/8 X 1 1/4 [6EA]
- 42 2307310 FERRITE BEAD (EUROPEAN MOTORS ONLY)
- 43 2075401 HEATSHRINK (EUROPEAN MOTORS ONLY)
- 44 2373427 SCREW #12 X 5/8 [4 EA]
- 50 2385110 INSULATOR PAD, EM
- 2994856 BAG ASSY (CONTAINS 38-41,27,23,24,44, 50, & TIE WRAPS)

2888460 SEAL & ORING KIT



* This item is part of an assembly. This item cannot be sold separately due to machining and /or assembly that is required.

